

MAGNETIC SENSOR INSTALLATION GUIDE

DLM MODEL:CP5038

NOTE:

SENSOR DOES NOT REQUIRE ANY POWER TO WORK. DO NOT RUN SENSOR WIRE IN SAME CONDUIT WITH 115 AND HIGHER VOLTAGE. TRANSIENTS CAN DAMAGE CONTROL BOARD.

STANDARD LOCATION

MOUNTING INSTRUCTIONS:

STEP 1

RECOMMENDED MOUNTING HEIGHT IS 36" (48" MAX.) FROM THE FLOOR. SENSOR CAN BE MOUNTED LEFT OR RIGHT SIDE OF DOOR.

STEP 2

MOUNT SENSOR AT DESIRED HEIGHT AND TIGHTEN TO DOOR CHANNEL WITH 1/4"-20 SET SCREWS.

STEP 3

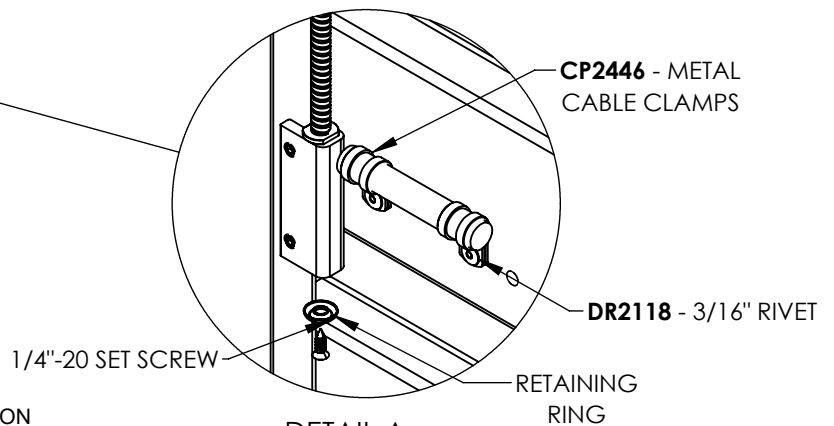
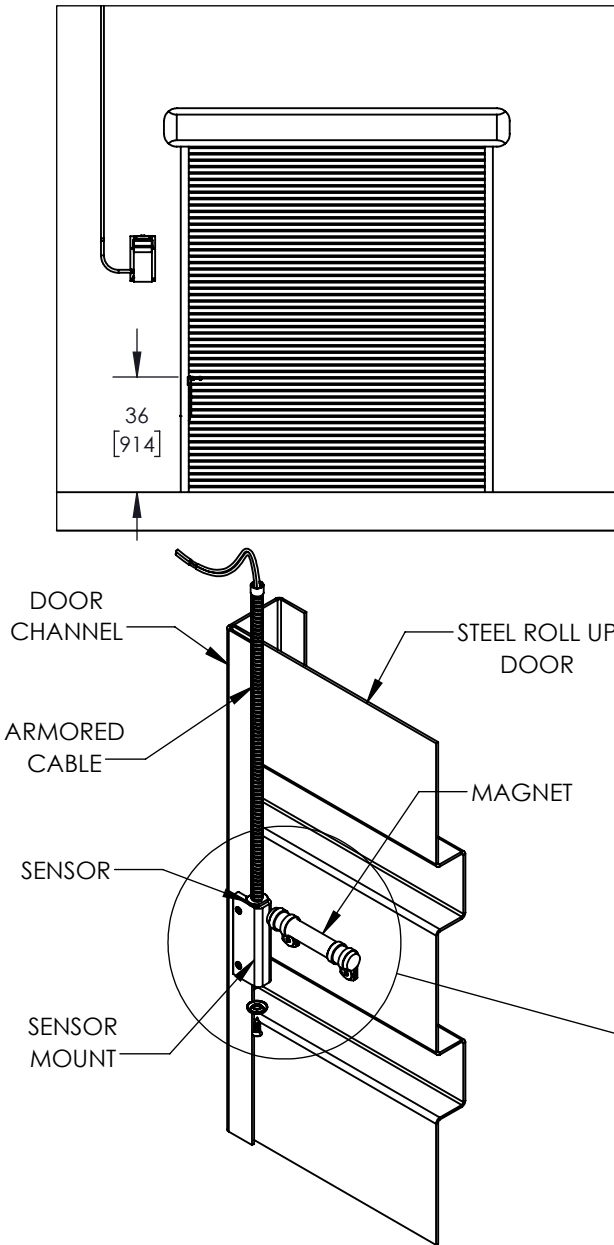
MOUNT FACE OF THE MAGNET WITHIN 1/4"-1/2" FROM THE EDGE OF THE SENSOR MOUNT. MARK AND PRE-DRILL TWO 3/16" HOLES FOR DR2446 -CABLE CLAMPS. ATTACH TO STEEL DOOR WITH TWO DR2118 - 3/16" BLIND RIVETS.

NOTE:

FOR BEST PERFORMANCE AND OPERATION, THE MAGNET MUST BE POSITIONED ONE END OR OTHER OF THE SENSOR MOUNT.

STEP 4

CONFIRM PROPER OPERATION BY MOVING DOOR UP AND DOWN. MAGNETIC CONTACT WILL CHANGE LIGHTS ON CONTROL BOARD ACCORDING TO THE "SEQUENCE OF OPERATION" IN THIS MANUAL.



DETAIL A
SCALE 1 : 3

WIRING INSTRUCTIONS:

WIRE SENSOR TO CONNECTOR "J2" LABELED "DOOR" ON CONTROL BOARD. CONNECT THE RED AND BLACK WIRES TO PIN 1 AND TO PIN 2 (PIN 3 NOT USED).

THE SENSOR IS A PASSIVE SWITCH; IT DOES NOT MATTER WHICH WIRE IS CONNECTED TO PIN 1 OR PIN 2.

SEE FIGURE #1

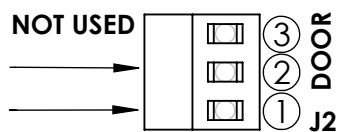


FIGURE: #1

