



INNOVATIVE PRODUCTS FOR THE LOADING DOCK INDUSTRY



PxV™

ENERGY-ABSORBING DOCK DOOR
PATENT NUMBER 6,988,528

Performance and Value in a Knockout Dock Door

Productivity at the loading dock continues to be as challenging as ever. More product and more volume equals more damage and high maintenance costs. Prevent damage before it occurs by using the right solution – the PxV Knockout Door by DL Manufacturing. PxV's innovative design allows it to flex and get out of harms way upon impact, keeping productivity up and maintenance costs down.

PxV™ Features –

Patented Polymer guide system – PxV uses a brush system instead of rollers, allowing for a continuous seal and a long lasting design that has the ability to knockout without costly door damage.

High Performance – PxV's rugged design resists damage from impact better than other knockout dock doors.

Exclusive Self-Correcting Design – Simply open and close to re-set, no spring loaded rollers or pins to maintain.

Flexible, 1.75" thick, insulated panels – PxV's panels are lightweight and insulated, suitable for refrigerated loading docks.

The continuous seal design of PxV's innovative brush system eliminates air and light gaps at the loading dock door – making PxV **ideal for food handling facilities and for facilities looking to reduce energy costs.**



Why Use Brush Technology..?



...It eliminates air and light gaps with a continuous seal.



...It allows the dock door to knockout and reset easier.



INNOVATIVE PRODUCTS FOR THE LOADING DOCK INDUSTRY

SPECIFICATIONS

PxV Dock Door

Panels: 1 3/4" Hot Dipped Galvanized Steel Sheets, Steel-Foam-Steel Sandwich

Insulation: Polyurethane Foam R-16

Door sizes: Up to 10' x 10'

Door Reset: Self Correcting - Resets by opening and closing the door

Side Brush Seals: Polypropylene

Top Seal: PVC - Vinyl

End Cap: Extruded, Impact Resistant PVC

Track: PVC

Knockout Capability: Full – top to bottom, inside or out

Lock: Offers intruder security

Door Styles: Available in true vertical, tilt back and high lift configurations

Torsion Springs

Spring Cycle: 15K (Standard), 25 or 50 K optional

Cables: 5/32" - 7 x 19 Mill Spec, Galvanized Cable

Shaft: 1" Tube Shaft

Bearings: 1" UCF Precision Flange Bearing

Counterweight

Counterweights: Cold Rolled Steel w/primer

Cables: 3/16" - 7 x 19 Mill Spec, Galvanized Cable

Shaft: 1" Keyed, Solid Shaft

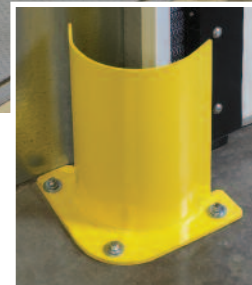
Bearings: 1" UCF Precision Flange Bearing



OPTIONS



Vision Panel – is insulated and offers the added safety of visible verification of truck activity.



Track Guard – protects the base of the track in an area prone to collision damage.

Check out our other dock doors



PxV™
ENERGY-ABSORBING DOCK DOOR
PATENT NUMBER 6,988,528

A Product of
DL Manufacturing
340 Gateway Park Drive
North Syracuse, NY 13212
Phone: 315-463-7348
Fax: 315-463-8559
www.dlmanufacturing.com

TOLL FREE 866-235-7468

PROUDLY MANUFACTURED IN THE USA 080717

Visit www.dlmanufacturing.com to view our complete line of loading dock products.